

Article

Plasma Concentrations of Extracellular Vesicles Are Decreased in Patients with Post-Infarct Cardiac Remodelling

Aleksandra Gąsecka ^{1,2}, Kinga Pluta ¹, Katarzyna Solarska ¹, Bartłomiej Rydz ¹, Ceren Eyileten ³, Marek Postula ³, Edwin van der Pol ^{2,4}, Rienk Nieuwland ², Monika Budnik ¹, Janusz Kochanowski ¹, Miłosz J. Jaguszewski ⁵, Łukasz Szarpak ^{6,7}, Tomasz Mazurek ¹, Agnieszka Kapłon-Cieślicka ^{1,*}, Grzegorz Opolski ¹ and Krzysztof J. Filipiak ¹

- ¹ 1st Chair and Department of Cardiology, Medical University of Warsaw, 02-097 Warsaw, Poland; aleksandra.gasecka@wum.edu.pl (A.G.); plutakinga.01@gmail.com (K.P.); kat.solarska@gmail.com (K.S.); barteksg9@gmail.com (B.R.); moni2911@interia.pl (M.B.); kochanowski.janusz@gmail.com (J.K.); tmazurek@kardia.edu.pl (T.M.); grzegorz.opolski@wum.edu.pl (G.O.); krzysztof.filipiak@wum.edu.pl (K.J.F.)
- ² Laboratory of Experimental Clinical Chemistry, Amsterdam University Medical Center, University of Amsterdam, 1105 AZ Amsterdam, The Netherlands; e.vanderpol@amsterdamumc.nl (E.v.d.P.); r.nieuwland@amsterdamumc.nl (R.N.)
- ³ Department of Experimental and Clinical Pharmacology, Centre for Preclinical Research and Technology, Medical University of Warsaw, 02-091 Warsaw, Poland; cereneyileten@gmail.com (C.E.); mpostula@wum.edu.pl (M.P.)
- ⁴ Biomedical Engineering and Physics, Amsterdam University Medical Center, University of Amsterdam, 1105 AZ Amsterdam, The Netherlands
- ⁵ 1st Department of Cardiology, Medical University of Gdańsk, 80-952 Gdansk, Poland; jamilosz@gmail.com
- ⁶ Maria Skłodowska-Curie Białystok Oncology Center, 15-027 Białystok, Poland; lukasz.szarpak@gmail.com
- ⁷ Maria Skłodowska-Curie Medical Academy in Warsaw, 03-411 Warsaw, Poland
- * Correspondence: agnieszka.kaplon@gmail.com



Citation: Gąsecka, A.; Pluta, K.; Solarska, K.; Rydz, B.; Eyileten, C.; Postula, M.; van der Pol, E.; Nieuwland, R.; Budnik, M.; Kochanowski, J.; et al. Plasma Concentrations of Extracellular Vesicles Are Decreased in Patients with Post-Infarct Cardiac Remodelling. *Biology* **2021**, *10*, 97. <https://doi.org/10.3390/biology10020097>

Academic Editors: Simona Bernardi and Carolina Balbi

Received: 4 January 2021

Accepted: 26 January 2021

Published: 30 January 2021

Publisher's Note: MDPI stays neutral with regard to jurisdictional claims in published maps and institutional affiliations.



Copyright: © 2021 by the authors. Licensee MDPI, Basel, Switzerland. This article is an open access article distributed under the terms and conditions of the Creative Commons Attribution (CC BY) license (<https://creativecommons.org/licenses/by/4.0/>).

Simple Summary: A heart attack may lead to the remodelling of the cardiac muscle, which negatively affects patient's prognosis. At present, the mechanisms of cardiac remodelling remain unclear. In patients with heart attack, many body cells become activated and release small particles, called extracellular vesicles, which can either aggravate cardiac injury, or contribute to healing of heart muscle. In our study, we hypothesized that the concentrations of these small particles in plasma allow to determine which patients will experience remodelling of the cardiac muscle after the heart attack. We found that concentrations of extracellular vesicles from endothelial cells, erythrocytes and platelets, measured directly the heart attack, were lower in patients who developed cardiac remodelling 6 months later, compared to patients who had no remodelling. Vesicles from endothelial cells and erythrocytes allowed to determine remodelling independently of other clinical features. Hence, decreased concentrations of these vesicles may on one hand be a sign of inappropriate cardiac repair mechanisms, and on the other hand may allow to identify patients, who will develop cardiac remodelling after the heart attack.

Abstract: Background, the mechanisms underlying left ventricular remodelling (LVR) after acute myocardial infarction (AMI) remain obscure. In the course of AMI, blood cells and endothelial cells release extracellular vesicles (EVs). We hypothesized that changes in EV concentrations after AMI may underlie LVR. Methods, plasma concentrations of EVs from endothelial cells (CD146+), erythrocytes (CD235a+), leukocytes (CD45+), platelets (CD61+), activated platelets (P-selectin+), and EVs exposing phosphatidylserine after AMI were determined by flow cytometry in 55 patients with the first AMI. LVR was defined as an increase in left ventricular end-diastolic volume by 20% at 6 months after AMI, compared to baseline. Results, baseline concentrations of EVs from endothelial cells, erythrocytes and platelets were lower in patients who developed LVR ($p \leq 0.02$ for all). Concentrations of EVs from endothelial cells and erythrocytes were independent LVR predictors (OR 8.2, CI 1.3–54.2 and OR 17.8, CI 2.3–138.6, respectively) in multivariate analysis. Combining the three EV subtypes allowed to predict LVR with 83% sensitivity and 87% specificity. Conclusions, decreased plasma concentrations of EVs from endothelial cells, erythrocytes and platelets predict LVR after AMI. Since EV release EVs

contributes to cellular homeostasis by waste removal, decreased concentrations of EVs may indicate dysfunctional cardiac homeostasis after AMI, thus promoting LVR.

Keywords: heart failure; left-ventricular remodelling; acute myocardial infarction; extracellular vesicles; flow cytometry

1. Introduction

Coronary artery disease (CAD) is a major public health problem, affecting around 126 million individuals worldwide [1]. Improvements in the pharmacological and interventional treatment of CAD, including primary percutaneous interventions (PCI) for acute myocardial infarction (AMI), decreased the short-term mortality rate after AMI [2,3]. Consequently, long-term complications including heart failure (HF) have become a leading cause of death in CAD [4].

After AMI, myocardial necrosis leads to formation of scar tissue. The structural and functional geometrical changes of the cardiac muscle are termed post-infarct left ventricular remodelling (LVR) [5]. Echocardiographic evaluation of LVR includes measurements of left ventricular end-diastolic and end-systolic volumes (LVEDV, LVESV), left ventricle ejection fraction (EF), and 3D assessment of left ventricle sphericity index [6]. The most widely used definition of LVR, applied also in this study, is a >20% increase in LVEDV at six months after AMI [7]. About 30% of the patients after anterior AMI and 17% after non-anterior AMI develop LVR, which increases the risk of HF and the mortality rate [7]. The pathophysiological mechanisms underlying LVR after AMI remain obscure. To prevent development of LVR in patients after AMI, beta-blockers, angiotensin-converting enzyme inhibitors or angiotensin receptor blockers and aldosterone antagonists are used [8]. However, since there are no reliable parameters to identify patients who will develop post-infarct LVR, the therapy cannot be tailored to the individual patients' need. Hence, new pathophysiological insights and biomarkers for LVR after AMI are urgently required. Extracellular vesicles (EVs) are released by blood and vascular endothelial cells into the blood [9]. EVs are thought to transport biomolecules, including cytokines, signalling proteins and nucleic acids, between cells, and therefore are believed to be involved in intercellular communication [10]. Depending on the molecular cargo, EVs can affect both physiological and pathological processes, such as immune responses, angiogenesis and wound healing [11]. Due to the multiple roles of EVs in health and disease, EVs may provide new and potentially non-invasive biomarkers [12]. Therefore, we hypothesized that (i) the concentrations of EVs evaluated after AMI differ between patients with and without LVR after 6 months, and, if so, (ii) the changes in EV concentrations may underlie LVR after AMI.

We compared the concentrations of EVs after AMI between patients who developed LVR at 6 months, and those who did not, and evaluated the predictive value of EVs for LVR.

2. Materials and Methods

2.1. Study Design

We prospectively evaluated the predictive value of EVs for LVR in all patients participating in the Antiplatelet Therapy Effect on Extracellular Vesicles (AFFECT EV) Echocardiography Substudy [13]. AFFECT EV was an investigator-initiated, prospective study conducted at the 1st Chair and Department of Cardiology, Medical University of Warsaw, Poland in collaboration with the Vesicle Observation Centre, Amsterdam University Medical Centers (UMC), The Netherlands [14]. The study protocol, designed in compliance with the Declaration of Helsinki, was approved by the Ethics Committee of Medical University of Warsaw, approval number KB/112/2016, registered in the Clinical Trials database as NCT02931045, and published previously [13]. All participants provided written informed consent.

2.2. Study Participants

Study inclusion and exclusion criteria are listed in Table S1. Patients were eligible for enrolment if they were (a) were admitted to the hospital due to the first ST-segment elevation of acute myocardial infarction (STEMI) or non-STEMI (NSTEMI) with an onset of symptoms during the previous 24 h, and (b) underwent PCI with stent implantation. STEMI was defined as persistent ST-segment elevation of at least 0.1 mV in at least two contiguous electrocardiography leads, or a new left bundle-branch block [15]. NSTEMI was diagnosed in patients presenting with typical anginal chest pain along with an elevation of cardiac troponin concentration in the peripheral blood and ST-segment changes (ST depression, transient ST elevation, T-wave changes) on electrocardiogram [16].

2.3. Treatment

All patients received standard treatment after AMI according to the guidelines, including double antiplatelet therapy, β -blocker, angiotensin-converting enzyme inhibitor or angiotensin receptor blocker, aldosterone receptor antagonist and protein pump inhibitor [15,16].

2.4. Clinical Data Collection

Data collected at baseline included demographics (age, gender), body mass index, initial diagnosis and cardiovascular risk factors, including arterial hypertension, diabetes, hyperlipidaemia, and smoking. In addition, routine laboratory parameters were recorded. Each patient underwent transthoracic echocardiography within 24 h after AMI and at 6-month follow-up visit. LVR was defined as an increase in LVEDV by 20% at 6 months after AMI, compared to baseline echocardiography.

2.5. Blood Collection and Handling

Peripheral venous blood samples were collected from fasting patients at a single time-point (within 24 h after AMI). With fasting, we mean ≥ 8 h after last consumption. Blood was collected and processed according to the recent guidelines to study EVs [17]. Briefly, blood was collected in 10 mL 0.109 mol/L citrated plastic tubes (S-Monovette, Sarstedt) via antecubital vein puncture using a 19-gauge needle, without tourniquet. The first 2 mL were discarded to avoid pre-activation of platelets. Within maximum 15 min from blood collection, platelet-depleted plasma was prepared by double centrifugation using a Rotina 380 R equipped with a swing-out rotor and a radius of 155 mm (Hettich Zentrifugen, Tuttlingen, Germany). The centrifugation parameters were: 2500 g, 15 min, 20 °C, acceleration speed 1, no brake. The first centrifugation step was done with 10 mL whole blood collection tubes. Supernatant was collected 10 mm above the buffy coat. The second centrifugation step was done with 3.5 mL plasma in 15 mL polypropylene centrifuge tubes (Greiner Bio-One B.V). Supernatant (platelet-depleted plasma) was collected 5 mm above the buffy coat, transferred into 5 mL polypropylene centrifuge tubes (Greiner Bio-One B.V., Vilvoorde, Belgium), mixed by pipetting, transferred to 1.5 mL low-protein binding Eppendorfs (Thermo Fisher Scientific, MA, USA), and stored in -80 °C until analyzed. Prior to analysis, samples were thawed for 1 min in a water bath at 37 °C.

2.6. Flow Cytometry

Concentration of EVs were measured by flow cytometry (A60-Micro, Apogee Flow Systems, Hertfordshire, UK). We diluted samples 2-fold to 1500-fold in citrated (0.32%) phosphate-buffered saline (PBS) to achieve a count rate of less than 3000 events/s to prevent swarm detection [18]. Diluted samples were measured during 120 s at a flow rate of 3.01 μ L per min. The trigger threshold was set at 14 arbitrary units of the side scatter detector, which corresponds to a side scattering cross section of 10 nm². The reported concentrations describe the number of particles (a) that exceed the side scatter threshold, (b) have a diameter >200 nm as determined by Flow-SR [19], (c) have a refractive index <1.42 to exclude positively labelled chylomicrons [20], and (d) that are positive

at the fluorescence detector(s) corresponding to the used label(s), per mL of platelet-depleted plasma. We measured concentrations of EVs from endothelial cells (CD146⁺), erythrocytes (CD235a⁺), leukocytes (CD45⁺), platelets (CD61⁺), activated platelets (P-selectin⁺), and EVs exposing phosphatidylserine (PS). Although a generic EV marker is lacking, proteins binding PS are commonly used to stain ~50% of all plasma EVs [21]. Hence, we used lactadherin to stain all (PS-exposing) plasma EVs. To improve the reproducibility of our EV flow cytometry experiments, we (a) applied the new reporting framework for the standardized reporting of EV flow cytometry experiments (MIFlowCyt-EV) [22], (b) calibrated all detectors, (c) determined the EV diameter and refractive index by the flow cytometry scatter ratio (Flow-SR) [19], and (d) applied custom-built software to fully automate data calibration and processing.

2.7. End-Points

The primary end-point was the difference between the concentrations of EVs after AMI in patients with and without LVR at 6 months. The secondary end-point was the predictive value of EVs for LVR at 6 months.

2.8. Statistical Analysis

The power calculation was based on the systematic review with meta-analysis of seven clinical studies, which demonstrated that plasma concentrations of EVs are two-fold higher in patients with acute coronary syndrome, compared to healthy controls [23]. About 30% of patients after AMI develops LVR. Sample size was calculated based on the following assumptions: (i) significance level for two-sided testing 0.05, (ii) test power 0.9, (iii) standard deviation (SD) ± 1.5 , (iv) estimated difference in mean EV concentrations between the group with and without AMI 2. Based on the above assumptions, the study should include at least 13 patients who will develop LVR (25% of the study group). Based on this sample size estimation, a total of 52 patients should be enrolled in the study. Assuming 10% of patients lost to follow-up, 60 patients were eventually included in the study.

Statistical analysis was conducted using IBM SPSS Statistics, version 24.0 (IBM). Categorical variables were presented as number and percentage and compared using Fischer's exact test. A Shapiro–Wilk test was used to assess normal distribution of continuous variables. Continuous variables were presented as mean and SD or median with interquartile range and compared using an unpaired *t*-test or Mann-Whitney U test. The diagnostic ability of EVs to discriminate between patients with and without LVR and the cut-offs were calculated using a receiver operating characteristic (ROC) curve. Logistic regression model incorporating the subtypes of EVs with significant sensitivity and specificity (area under the ROC curve, AUC) and clinical characteristics were used to determine the best model for LVR prediction. Mortality and other adverse events were reported descriptively. A *p*-value below 0.05 was considered significant.

3. Results

The study flow and exclusion and inclusion overview are shown in Figure 1. Between January 2017 and June 2018, 60 patients were enrolled, and 55 patients were included in the final analysis (5 patients withdrew consent and did not attend the follow-up visit at 6 months). Patient characteristics are shown in Table 1. Twelve patients developed LVR at 6 months (22%). Cardiovascular risk factors and laboratory characteristics including haemoglobin, platelet count, troponin-I and C-reactive protein concentration at baseline were comparable between the groups. STEMI occurred more frequently in patients who developed LVR compared to patients without LVR, but this difference did not reach statistical significance (92% vs. 72%, *p* = 0.26). Echocardiography parameters and pharmacotherapy were comparable between the groups. All patients received dual antiplatelet therapy, all patients except for one received atorvastatin, and more than 80% of patients received a β -blocker, an angiotensin-converting enzyme inhibitor, and a proton pump inhibitor. At 6 months, LVEDV and LVESV were larger with patients with LVR, compared to those

without LVR ($p = 0.03$, $p = 0.04$, respectively). The EF was comparable in both groups. There were no deaths and only one recurrent hospitalization due to HF during the study in a patient from the LVR group.

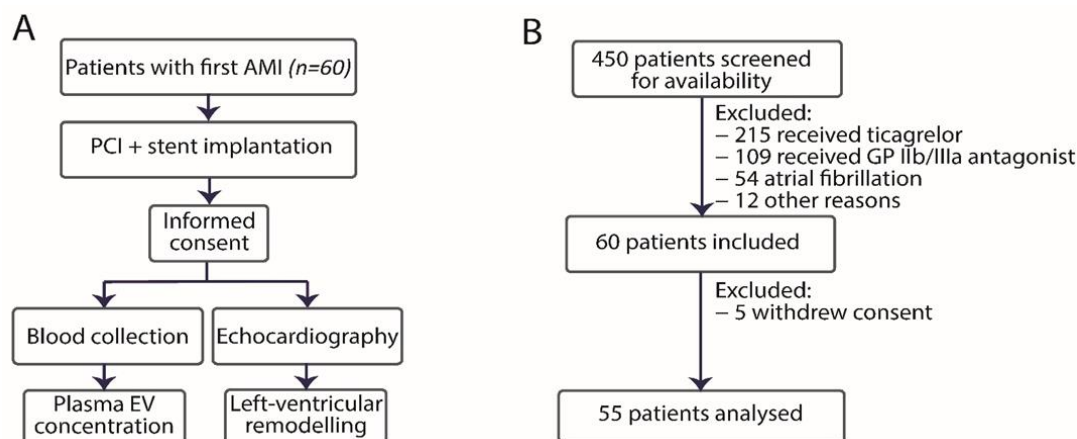


Figure 1. Study design (A) and inclusion and exclusion chart (B) Abbreviations: AMI—acute myocardial infarction; ASA—acetylsalicylic acid; GP—glycoprotein; PCI—percutaneous coronary intervention.

Table 1. Main characteristics of patients with and without left ventricular remodelling (LVR) at 6 months after acute myocardial infarction.

| Characteristic | LVR (n = 12) | | No LVR (n = 43) | | p-Value |
|--|--------------|--------------|-----------------|--------------|---------|
| | N | SD, range, % | N | SD, range, % | |
| Age, years—mean ± SD | 59.5 | 10.3 | 65.6 | 9.3 | 0.06 |
| Male gender—number (%) | 8 | 67 | 32 | 74 | 0.72 |
| BMI—median (IQR) | 28.1 | 25.5–29.9 | 27.9 | 25.4–31.8 | 0.73 |
| Diagnosis at admission—number (%) | | | | | |
| STEMI | 11 | 92 | 31 | 72 | 0.26 |
| Anterior AMI | 2 | 17 | 8 | 19 | 1.00 |
| Cardiovascular risk factors—number (%) | | | | | |
| Arterial hypertension | 8 | 67 | 26 | 60 | 0.75 |
| Diabetes mellitus | 3 | 35 | 7 | 16 | 0.67 |
| Dyslipidaemia | 8 | 67 | 29 | 67 | 1.00 |
| Smoking | 5 | 41 | 18 | 41 | 1.00 |
| Laboratory characteristics at baseline | | | | | |
| Creatinine, mg/dL—median (IQR) | 0.91 | 0.73–1.02 | 0.95 | 0.81–1.05 | 0.39 |
| C-reactive protein—median (IQR) | 3.75 | 1.73–6.08 | 3.00 | 1.7–5.9 | 0.16 |
| Haemoglobin, g/dL—mean ± SD | 14.0 | 1.3 | 13.9 | 1.3 | 0.89 |
| INR—mean ± SD | 1.14 | 0.16 | 1.07 | 0.08 | 0.06 |
| NT-proBNP—median (IQR) | 696 | 386–1936 | 888 | 192–1978 | 0.49 |

Table 1. Cont.

| Characteristic | LVR (n = 12) | | No LVR (n = 43) | | p-Value |
|--|--------------|----------|-----------------|----------|---------|
| Platelet count, 10 ³ /μL–mean (SD) | 262.3 | 75.4 | 235.6 | 69.2 | 0.27 |
| Troponin I, ng/mL–median (IQR) | 16.2 | 5.2–42.6 | 14.7 | 2.5–35.5 | 0.46 |
| Echocardiography at baseline | | | | | |
| LVEDV, mL–median (IQR) | 104 | 92–120 | 105 | 95–123 | 0.58 |
| LVESV, mL–median (IQR) | 41 | 38–52 | 41 | 40–65 | 0.38 |
| LVEF, mL–median (IQR) | 53 | 47–57 | 51 | 45–54 | 0.43 |
| Echocardiography at 6 months | | | | | |
| LVEDV, mL–median (IQR) | 107 | 97–126 | 83 | 62–93 | 0.03 |
| LVESV, mL–median (IQR) | 59 | 43–63 | 57 | 27–48 | 0.04 |
| LVEF, mL–median (IQR) | 56 | 50–58 | 60 | 52–63 | 0.10 |
| Pharmacotherapy at discharge–number (%) | | | | | |
| Aspirin | 12 | 100 | 43 | 100 | 1.00 |
| P2Y12 inhibitor | 12 | 100 | 43 | 100 | 1.00 |
| Atorvastatin | 11 | 92 | 42 | 98 | 0.39 |
| β-blocker | 10 | 83 | 39 | 90 | 0.60 |
| ACE-inhibitor or ARB | 11 | 92 | 41 | 95 | 0.53 |
| Aldosterone receptor antagonist | 3 | 25 | 11 | 26 | 1.00 |
| Proton pump inhibitor | 11 | 92 | 40 | 93 | 1.00 |
| Pharmacotherapy at follow-up–number (%) | | | | | |
| Aspirin | 12 | 100 | 43 | 100 | 1.00 |
| P2Y12 inhibitor | 12 | 92 | 43 | 100 | 1.00 |
| Atorvastatin | 11 | 92 | 41 | 95 | 0.53 |
| β-blocker | 10 | 83 | 38 | 88 | 0.64 |
| ACE-inhibitor or ARB | 11 | 92 | 42 | 98 | 0.40 |
| Aldosterone receptor antagonist | 4 | 33 | 11 | 26 | 0.72 |
| Proton pump inhibitor | 10 | 83 | 41 | 95 | 0.20 |

Abbreviations: ACE: angiotensin-converting enzyme; ARB: angiotensin-receptor blockers; BMI: body mass index, weight in kilograms divided by square of the height in meters; CK-MB: creatine kinase muscle-brain isoenzyme; CVD: cardiovascular disease; GLS: global longitudinal strain; INR: international normalized ratio; IQR: interquartile range; LDL-C: low-density lipoprotein-cholesterol; LVEDD: left ventricle end-diastolic diameter; LVEDV: left ventricle end-diastolic volume; LVESV: left ventricle end-systolic volume; LVEF: left ventricle ejection fraction; NSTEMI: non-ST-segment elevation myocardial infarction; NT-proBNP: N-terminal pro-B-type natriuretic peptide; SD: standard deviation; STEMI: ST-segment elevation myocardial infarction.

Left-Ventricular Remodelling

Figure 2 shows the concentrations of EVs after AMI in patients with and without LVR at 6 months. The concentrations of EVs from endothelial cells (Figure 2A), erythrocytes (Figure 2C) and platelets (Figure 2E) were lower in patients who developed LVR, compared to those who did not develop LVR ($p \leq 0.02$ for all), and discriminated between these two groups of patients (area under ROC curve [AUC] ≥ 0.74 , $p \leq 0.02$ for all) in univariate analysis (Figure 2B,D,F). The statistical estimates for prediction of LVR by EVs from endothelial cells, erythrocytes and platelets, including the cut-off values determined based on the ROC

curves, are showed in Table S2. The concentrations of other EVs, i.e., EVs from activated platelets, leukocytes and exposing PS, were comparable between the groups and did not predict LVR (Figure S1).

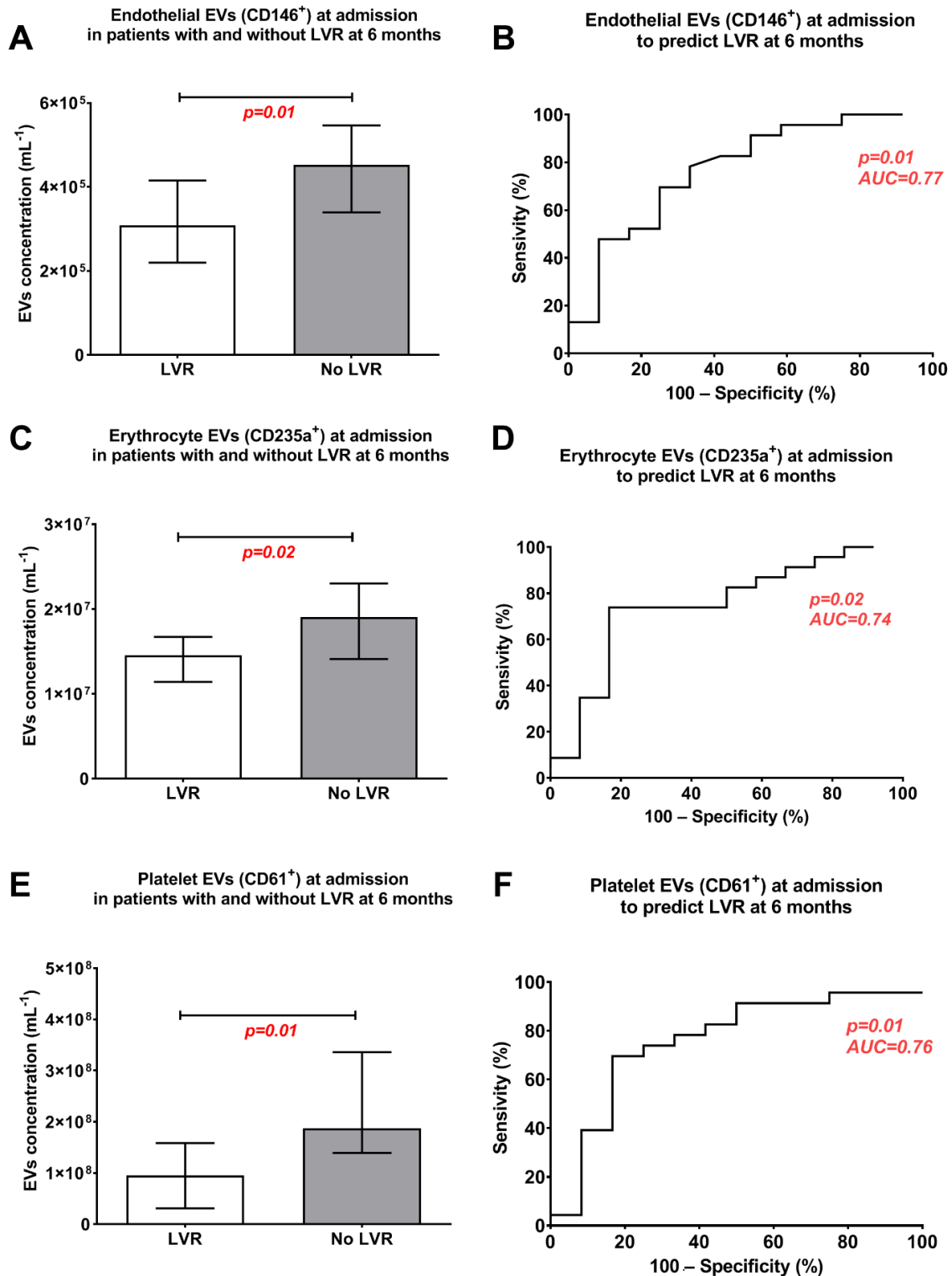


Figure 2. Concentrations of extracellular vesicles (EVs) measured with flow cytometry in platelet-depleted plasma prepared from patients with and without left ventricle remodelling (LVR) 6 months after AML. (A,B): EVs from endothelial cells. (C,D): EVs from erythrocytes. (E,F): EVs from platelets.

Because the concentrations of EVs from endothelial cells, erythrocytes and platelets discriminated between patients with and without LVR when measured separately, we incorporated these EV subtypes in a logistic regression model along with clinical data. To select the clinical data which should be incorporated in the model, we compared characteristics presented in Table S1 between patients with high and low concentrations of (i) endothelial cells, (ii) erythrocyte EVs and (iii) platelets EVs, based on the determined cut-off values. Patients with low endothelial EV concentrations ($<3.64 \times 10^5$ per ml) had higher INR ($p = 0.024$), compared to patients with high endothelial EV concentrations. Patients with low erythrocyte EV concentration ($<1.67 \times 10^7$ per ml) had higher creatinine ($p = 0.041$), compared to patients with high erythrocyte EV concentrations. Finally, patients with low platelet EV concentrations ($<1.68 \times 10^8$ per ml) had lower platelet count ($p = 0.009$), lower LDL-C concentration ($p = 0.004$) and higher prevalence of hypertension ($p = 0.013$) and smoking ($p = 0.049$), compared to patients with high platelet EV concentrations. Other clinical characteristics did not differ between the subsequent patient groups. Established predictors of LVR such as age, gender, AMI type and peak troponin I concentration were included in the model as well [24,25].

Multivariate logistic regression models for prediction of LVR was done for each EV subtype separately (Table S3). The concentrations of EVs from endothelial cells and erythrocytes were independent predictors of LVR (OR 8.2, CI 1.3–54.2, $p = 0.03$ for endothelial EVs; OR 17.8, CI 2.3–138.6, $p = 0.01$ for erythrocyte EVs). In contrast, EVs from platelets did not predict LVR in multivariate analysis (OR 21.5, CI 0.8–572.1, $p = 0.07$). However, combining the concentrations of EVs from endothelial cells, erythrocytes and platelets in one ROC curve improved LVR prediction (AUC 0.87, CI 0.73–1.00, $p = 0.0004$; Figure 3), compared to each EV subtype measured separately. No other clinical characteristics predicted LVR (Table S3).

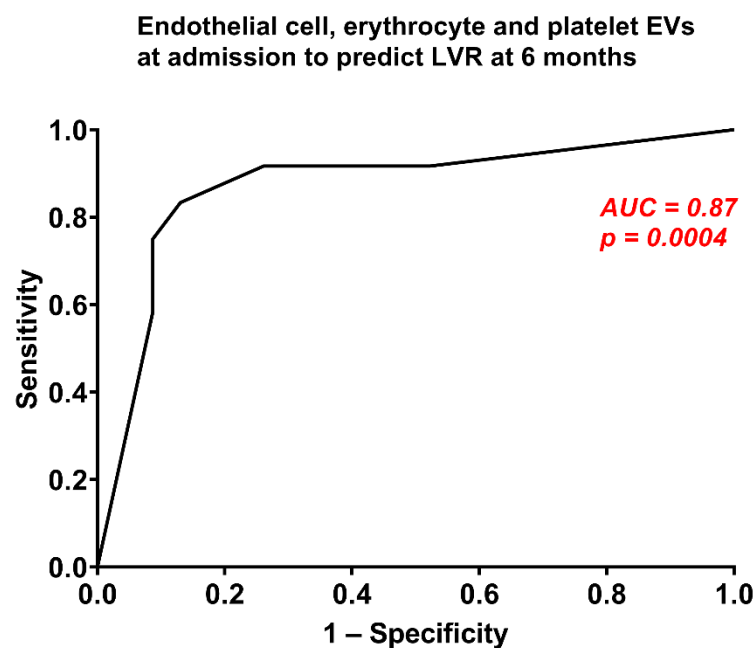


Figure 3. Combination of the concentrations of extracellular vesicles (EVs) from endothelial cells, erythrocytes and platelets based on the cut-offs to predict left ventricular remodelling (LVR) after AMI.

4. Discussion

The main finding of our study is that the plasma concentrations of EVs from endothelial cells (CD146⁺), erythrocytes (CD235a⁺) and platelets (CD61⁺) 24 h after AMI predicted LVR at 6 months (Figure 2). Combining these 3 EV subtypes allowed to predict LVR after AMI with 83% sensitivity and 87% specificity (Figure 3).

Despite growing evidence demonstrating the role of EVs in cardiac and vascular remodelling [26], to the best of our knowledge this is the first clinical study to propose a novel strategy to predict LVR based on measuring the concentrations of EVs in plasma. Multiple other biomarkers including NT-proBNP, cardiac troponins, aspartate and alanine transaminase and C-reactive protein were evaluated for the prediction of LVR [27]. However, the combination of these biomarkers exhibited lower sensitivity and specificity compared to the strategy which we developed in this study, based on EVs [27]. In a recent systematic review summarizing the association between circulating biomarkers and LVR after AMI, 112 relations between 52 different biomarkers and LVR were reported [28]. The biomarkers most consistently associated with LVR included matrix metalloproteinase-9, collagen peptides, and B-type natriuretic peptide [28]. However, none of these biomarkers has been hitherto applied in a routine clinical setting to predict LVR due to their low sensitivity and/or specificity.

There is increasing evidence that EVs mediate the complex interplay between cardiomyocytes, fibroblasts, endothelial cells, vascular smooth muscle cells and extracellular matrix underlying LVR [29]. Depending on the cellular origin and concentration of EVs, EVs are either cardioprotective or promote adverse LVR [30]. In our study, decreased concentrations of EVs from endothelial cells (CD146⁺), erythrocytes (CD235a⁺) and platelets (CD61⁺) were associated with LVR.

Communication between endothelial cells and cardiomyocytes regulates cardiomyocyte function and the contractile state by providing both oxygenated blood supply and local protective signals that promote cardiomyocyte organization and survival [31]. For example, endothelial EVs transfer several active molecules including regulatory peptides and growth factors involved in angiogenesis and tissue reparation, therefore triggering epigenetic changes in the cardiomyocytes [26]. On the other hand, endothelial EVs might be involved in myocardial and vascular damage [26]. In our study, decreased concentrations of endothelial EVs were independent predictors of LVR, implying their cardioprotective properties, previously showed in cell cultures and animal models [32]. However, the population of endothelial EVs is very heterogeneous and their function is determined by the surface molecules and content [33]. Since we did not perform any functional experiments, we may only speculate about the role of CD146⁺ endothelial EVs in LVR.

Although erythrocytes are traditionally perceived as transporters of oxygen and nutrients to the tissues, recent experimental evidence indicates that they also participate in the nitric oxide metabolism and redox balance [34]. Myocardial reperfusion in patients with AMI decreased the activity of erythrocyte anti-oxidant enzymes, suggesting impaired anti-oxidant mechanisms after AMI [35]. Oxidative stress, in turn, plays an important role in HF pathophysiology. In a murine model, overexpression of the anti-oxidative enzyme glutathione peroxidase could attenuate post-AMI LVR and HF development [36]. Erythrocyte EV formation was showed to enable the selective removal of the oxidized proteins from erythrocytes [37]. In a transgenic murine model, erythrocyte EVs facilitated the cross-talk between erythrocytes and cardiomyocytes that contributed to the homeostasis after myocardial infarction [38]. Based on our results, it could be hypothesized that the decreased concentrations of erythrocyte EVs after AMI may indicate the disturbed erythrocyte redox balance, which contributes to LVR. Possibly, the degree of erythrocyte redox balance impairment might be associated with infarct area size. However, in our multivariate logistic regression model, AMI type and peak troponin I were not independent predictors of LVR. Hence, the factors responsible for erythrocyte redox balance and EV release after AMI remain to be established.

Platelets are widely recognized as key players in primary hemostasis and thrombosis. However, increasing experimental and clinical evidence shows that platelets contribute to many other pathophysiological processes including wound healing and cardiac regeneration through the release of growth factors, cytokines, and EVs [39,40]. Platelet EVs were showed to have pro-inflammatory properties in multiple studies. However, an initial, acute period of controlled inflammation may have a paradoxically beneficial role in

cardiac recovery after AMI [41]. Whereas the direct interactions between platelet EVs and cardiomyocytes were not yet extensively studied, platelet EVs were demonstrated to improve endothelial cell function by decreasing endothelial permeability after thrombin challenge [42]. Finally, platelet EVs have been implicated in the therapeutic activity, of platelet-rich-plasma [43]. If so, EVs might be used not only to predict LVR, but also to augment regeneration of the post-infarct myocardium [44].

We did not use the second detection technique to study EVs, which does not comply with the MISEV 2018 (Minimal information for studies of extracellular vesicles) recommendations, which is a limitation of this study [45]. However, the goal of our study required both (i) to determine the EVs concentrations in a high-throughput way, and (ii) to determine the EVs cellular origin. None of the other well-established methods to study including nanoparticle tracking analysis, tunable resistive pulse sensing, Western blot or transmission electron microscopy would allow to fulfil both of these goals [46] and therefore they were not applied in this study. Another limitation is that we were not able to detect all EVs in plasma, since the EV-dedicated flow cytometer applied in this study has a detection limit of 150–200 nm for EVs [47], and most EVs have a diameter of less than 300 nm [48]. Hence, our findings specifically refer to EVs above the detection limit of the applied flow cytometer and cannot be extrapolated to the entire EV population. To increase the reliability of our findings and prove that the observed effects are really due to EVs and not due to other particles present in plasma (for examples chylomicrons), we compared the concentrations and predictive value of total particles and non-EV particles including chylomicrons (defined based on the differences in refractive index) [19] in patients with and without LVR (Figure S2). Neither total particles nor non-EV particles differed between patient groups and had predictive value for LVR, confirming that our findings are specifically due to EVs. Nevertheless, since we have not ultimately proved the association between the decreased concentrations of EVs and hard clinical end-points including recurrent hospitalizations or death due to HF, our results remain hypothesis-generating and required confirmation in future trials.

5. Conclusions

Decreased plasma concentrations of EVs from endothelial cells, erythrocytes and platelets predict LVR after AMI. Since EV release contributes to cellular homeostasis by waste removal, decreased concentrations of EVs may indicate dysfunctional cardiac homeostasis after AMI, thus promoting LVR. Understanding how the communication between endothelial cells, erythrocytes and platelets cardiomyocytes is critical for cardiac regeneration after AMI.

Supplementary Materials: The following are available online at <https://www.mdpi.com/2079-7377/10/2/97/s1>, Figure S1: Concentrations of extracellular vesicles which did not differ between patients with and without left ventricle remodelling, Figure S2: Concentrations of total particles and non-EV particles including chylomicrons in patients with and without left ventricle remodelling after AMI, Table S1: Study inclusion and exclusion criteria, Table S2: Statistical estimates for prediction of left ventricle remodelling by extracellular vesicles, Table S3: Multivariate logistic regression model for prediction of left ventricle remodelling including extracellular vesicles and clinical variables.

Author Contributions: Conceptualization, A.G., A.K.-C., K.J.F.; methodology, A.G., K.P., K.S., B.R.; formal analysis, C.E., M.P.; investigation, R.N., E.v.d.P.; resources, M.B., J.K., T.M.; data curation, M.J.J., Ł.S.; writing—original draft preparation, K.S., B.R.; writing—review and editing, A.G., A.K.-C., K.J.F.; visualization R.N., E.v.d.P.; supervision, A.K.-C., G.O., K.J.F.; project administration, C.E., M.P.; funding acquisition, A.G., K.J.F., M.P. All authors have read and agreed to the published version of the manuscript.

Funding: The work was funded by the PRELUDIUM Grant of the Polish National Science Centre (2018/31/N/NZ7/02260) to A. Gąsecka, PRELUDIUM Grant of the Polish National Science Centre (2017/25/N/NZ5/00545) to C. Eyileten and VENI grant to E. van der Pol (15924). The funders had no role in the design of the study; in the collection, analyses, or interpretation of data; in the writing of the manuscript, or in the decision to publish the results.

Institutional Review Board Statement: The study was conducted according to the guidelines of the Declaration of Helsinki, and approved by the Ethics Committee of Medical University of Warsaw (approval number KB/112/2016, date of approval 10 May 2016).

Informed Consent Statement: Informed consent was obtained from all subjects involved in the study and to publish this paper.

Data Availability Statement: Source data including flow cytometry files are available upon request.

Acknowledgments: A. Gasecka, C. Eyileten, M. Postuła and K.J. Filipiak acknowledge the International and Intercontinental Cardiovascular and Cardiometabolic Research Team (I-COMET).

Conflicts of Interest: E. van der Pol is a cofounder and shareholder of Exometry BV. All other authors declare no conflict of interest.

References

1. Ab Khan, M.; Hashim, M.J.; Mustafa, H.; Baniyas, M.Y.; Al Suwaidi, S.K.B.M.; Alkatheeri, R.; Alblooshi, F.M.K.; Almatrooshi, M.E.A.H.; Alzaabi, M.E.H.; Al Darmaki, R.S.; et al. Global Epidemiology of Ischemic Heart Disease: Results from the Global Burden of Disease Study. *Cureus* **2020**, *12*, e9349. [[CrossRef](#)]
2. Mathers, C.D.; Loncar, D. Projections of Global Mortality and Burden of Disease from 2002 to 2030. *PLoS Med.* **2006**, *3*, e442. [[CrossRef](#)] [[PubMed](#)]
3. Hartley, A.; Marshall, D.C.; Saliccioli, J.D.; Sikkil, M.B.; Maruthappu, M.; Shalhoub, J. Trends in Mortality from Ischemic Heart Disease and Cerebrovascular Disease in Europe. *Circulation* **2016**, *133*, 1916–1926. [[CrossRef](#)] [[PubMed](#)]
4. Anderson, J.L.; Morrow, D.A. Acute myocardial infarction. *N. Engl. J. Med.* **2017**, *376*, 2053–2064. [[CrossRef](#)] [[PubMed](#)]
5. Flachskampf, F.; Schmid, M.; Rost, C.; Achenbach, S.; DeMaria, A.N.; Daniel, W.G. Cardiac imaging after myocardial infarction. *Eur. Hear. J.* **2010**, *32*, 272–283. [[CrossRef](#)]
6. Ola, R.K.; Meena, C.B.; Ramakrishnan, S.; Agarwal, A.; Bhargava, S. Detection of Left Ventricular Remodeling in Acute ST Elevation Myocardial Infarction after Primary Percutaneous Coronary Intervention by Two Dimensional and Three Dimensional Echocardiography. *J. Cardiovasc. Echogr.* **2018**, *28*, e39. [[CrossRef](#)]
7. Cokkinos, D.; Belogiannis, C. Left Ventricular Remodelling: A Problem in Search of Solutions. *Eur. Cardiol. Rev.* **2016**, *11*, 29–35. [[CrossRef](#)]
8. Frigerio, M.; Roubina, E. Drugs for Left Ventricular Remodeling in Heart Failure. *Am. J. Cardiol.* **2005**, *96*, 10–18. [[CrossRef](#)]
9. Van Der Pol, E.; Böing, A.N.; Harrison, P.; Sturk, A.; Nieuwland, R. Classification, Functions, and Clinical Relevance of Extracellular Vesicles. *Pharmacol. Rev.* **2012**, *64*, 676–705. [[CrossRef](#)]
10. Yuana, Y.; Sturk, A.; Nieuwland, R. Extracellular vesicles in physiological and pathological conditions. *Blood Rev.* **2013**, *27*, 31–39. [[CrossRef](#)]
11. Buzas, E.I.; György, B.; Nagy, G.; Falus, A.; Gay, S. Emerging role of extracellular vesicles in inflammatory diseases. *Nat. Rev. Rheumatol.* **2014**, *10*, 356–364. [[CrossRef](#)] [[PubMed](#)]
12. Gasecka, A.; Böing, A.N.; Filipiak, K.J.; Nieuwland, R. Platelet extracellular vesicles as biomarkers for arterial thrombosis. *Platelets* **2016**, *28*, 228–234. [[CrossRef](#)] [[PubMed](#)]
13. Gasecka, A.; Nieuwland, R.; Budnik, M.; Dignat-George, F.; Eyileten, C.; Harrison, P.; Huczek, Z.; Kaplon-Cieslicka, A.; Lacroix, R.; Opolski, G.; et al. Randomized controlled trial protocol to investigate the antiplatelet therapy effect on extracellular vesicles (AFFECT EV) in acute myocardial infarction. *Platelets* **2018**, *31*, 26–32. [[CrossRef](#)] [[PubMed](#)]
14. Gasecka, A.; Nieuwland, R.; Budnik, M.; Dignat-George, F.; Eyileten, C.; Harrison, P.; Lacroix, R.; Leroyer, A.; Opolski, G.; Pluta, K.; et al. Ticagrelor attenuates the increase of extracellular vesicle concentrations in plasma after acute myocardial infarction compared to clopidogrel. *J. Thromb. Haemost.* **2020**, *18*, 609–623. [[CrossRef](#)]
15. Ibanez, B.; James, S.; Agewall, S.; Antunes, M.J.; Bucciarelli-Ducci, C.; Bueno, H.; Caforio, A.L.P.; Crea, F.; Goudevenos, J.A.; Halvorsen, S.; et al. 2017 ESC Guidelines for the management of acute myocardial infarction in patients presenting with ST-segment elevation: The Task Force for the management of acute myocardial infarction in patients presenting with ST-segment elevation of the European Society of Cardiology (ESC). *Eur. Heart J.* **2018**, *39*, 1–66. [[CrossRef](#)]
16. Roffi, M.; Patrono, C.; Collet, J.P.; Mueller, C.; Valgimigli, M.; Andreotti, F.; Bax, J.J.; Borger, M.A.; Brotons, C.; Chew, D.P.; et al. 2015 ESC Guidelines for the management of acute coronary syndromes in patients presenting without persistent ST-segment elevation: Task Force for the Management of Acute Coronary Syndromes in Patients Presenting without Persistent ST-Segment Elevation of the European Society of Cardiology (ESC). *Eur. Heart J.* **2016**, *37*, 267–315. [[CrossRef](#)]
17. Coumans, F.A.W.; Brisson, A.R.; Buzas, E.I.; Dignat-George, F.; Drees, E.E.E.; El-Andaloussi, S.; Emanuelli, C.; Gasecka, A.; Hendrix, A.A.; Hill, A.F.A.F.; et al. Methodological guidelines to study extracellular vesicles. *Circ. Res.* **2017**, *120*, 1632–1648. [[CrossRef](#)]
18. van der Pol, E.; Van Gemert, M.J.C.; Sturk, A.; Nieuwland, R.; Van Leeuwen, T.G.; Nieuwland, R.; Van Leeuwen, T.G. Single vs. swarm detection of microparticles and exosomes by flow cytometry. *J. Thromb. Haemost.* **2012**, *10*, 919–930. [[CrossRef](#)]

19. van der Pol, E.; de Rond, L.; Coumans, F.A.W.; Gool, E.L.; Böing, A.N.; Sturk, A.; Nieuwland, R.; van Leeuwen, T.G. Absolute sizing and label-free identification of extracellular vesicles by flow cytometry. *Nanomed. Nanotechnol. Biol. Med.* **2018**, *14*, 801–810. [[CrossRef](#)]
20. de Rond, L.; Libregts, S.F.W.M.; Rikkert, L.G.; Hau, C.M.; van der Pol, E.; Nieuwland, R.; van Leeuwen, T.G.; Coumans, F.A.W. Refractive index to evaluate staining specificity of extracellular vesicles by flow cytometry. *J. Extracell. Vesicles* **2019**, *8*, 1643671. [[CrossRef](#)]
21. De Rond, L.; Van Der Pol, E.; Hau, C.M.; Varga, Z.; Sturk, A. Comparison of Generic Fluorescent Markers for Detection of Extracellular Vesicles by Flow Cytometry. *Clin. Chem.* **2018**, *64*, 680–689. [[CrossRef](#)] [[PubMed](#)]
22. Welsh, J.A.; Van Der Pol, E.; Arkesteijn, G.J.A.; Bremer, M.; Brisson, A.; Coumans, F.; Dignat-George, F.; Duggan, E.; Ghiran, I.; Giebel, B.; et al. MIFlowCyt-EV: A framework for standardized reporting of extracellular vesicle flow cytometry experiments. *J. Extracell. Vesicles* **2020**, *9*, 1713526. [[CrossRef](#)] [[PubMed](#)]
23. Sun, C.; Zhao, W.-B.; Chen, Y.; Hu, H. Higher Plasma Concentrations of Platelet Microparticles in Patients with Acute Coronary Syndrome: A Systematic Review and Meta-analysis. *Can. J. Cardiol.* **2016**, *32*, e1325. [[CrossRef](#)] [[PubMed](#)]
24. Ørn, S.; Manhenke, C.; Anand, I.S.; Squire, I.; Nagel, E.; Edvardsen, T.; Dickstein, K. Effect of Left Ventricular Scar Size, Location, and Transmurality on Left Ventricular Remodeling With Healed Myocardial Infarction. *Am. J. Cardiol.* **2007**, *99*, 1109–1114. [[CrossRef](#)] [[PubMed](#)]
25. Hallén, J.; Jensen, J.K.; Fagerland, M.W.; Jaffe, A.S.; Atar, D. Cardiac troponin I for the prediction of functional recovery and left ventricular remodelling following primary percutaneous coronary intervention for ST-elevation myocardial infarction. *Heart* **2010**, *96*, 1892–1897. [[CrossRef](#)]
26. Berezin, A.E.; Berezin, A.A. Extracellular endothelial cell-derived vesicles: Emerging role in cardiac and vascular remodeling in heart failure. *Front. Cardiovasc. Med.* **2020**, *7*, 47. [[CrossRef](#)]
27. Reinstadler, S.J.; Feistritzer, H.-J.; Reindl, M.; Klug, G.; Mayr, A.; Mair, J.; Jaschke, W.; Metzler, B. Combined biomarker testing for the prediction of left ventricular remodelling in ST-elevation myocardial infarction. *Open Heart* **2016**, *3*, e000485. [[CrossRef](#)]
28. Fertin, M.; Dubois-Deruy, E.; Belliard, A.; Amouyel, P.; Pinet, F.; Bauters, C. Usefulness of Circulating Biomarkers for the Prediction of Left Ventricular Remodeling After Myocardial Infarction. *Am. J. Cardiol.* **2012**, *110*, 277–283. [[CrossRef](#)]
29. Waldenström, A.; Ronquist, G. Role of Exosomes in Myocardial Remodeling. *Circ. Res.* **2014**, *114*, 315–324. [[CrossRef](#)]
30. Ailawadi, S.; Wang, X.; Guo-Chang, F.; Fan, G.-C. Pathologic function and therapeutic potential of exosomes in cardiovascular disease. *Biochim. Biophys. Acta (BBA) Mol. Basis Dis.* **2015**, *1852*, 1–11. [[CrossRef](#)]
31. Hsieh, P.C.; Davis, M.E.; Lisowski, L.K.; Lee, R.T. Endothelial-Cardiomyocyte Interactions in Cardiac Development and Repair. *Annu. Rev. Physiol.* **2006**, *68*, 51–66. [[CrossRef](#)] [[PubMed](#)]
32. Gasecka, A.; Nieuwland, R.; Siljander, P.R.-M. Platelet-derived extracellular vesicles. *Platelets* **2019**, 401–416. [[CrossRef](#)]
33. Deng, F.; Wang, S.; Zhang, L. Endothelial microparticles act as novel diagnostic and therapeutic biomarkers of circulatory hypoxia-related diseases: A literature review. *J. Cell. Mol. Med.* **2017**, *21*, 1698–1710. [[CrossRef](#)] [[PubMed](#)]
34. Kuhn, V.; Diederich, L.; Keller IV, T.C.S.; Kramer, C.M.; Lückstädt, W.; Panknin, C.; Suvorava, T.; Isakson, B.E.; Kelm, M.; Cortese-Krott, M.M. Red blood cell function and dysfunction: Redox regulation, nitric oxide metabolism, anemia. *Antioxid. Redox Signal.* **2017**, *26*, 718–742. [[CrossRef](#)]
35. Bhakuni, P.; Chandra, M.; Misra, M.K. Oxidative stress parameters in erythrocytes of post-reperused patients with myocardial infarction. *J. Enzym. Inhib. Med. Chem.* **2005**, *20*, 377–381. [[CrossRef](#)]
36. Shiomi, T.; Tsutsui, H.; Matsusaka, H.; Murakami, K.; Hayashidani, S.; Ikeuchi, M.; Wen, J.; Kubota, T.; Utsumi, H.; Takeshita, A. Overexpression of Glutathione Peroxidase Prevents Left Ventricular Remodeling and Failure After Myocardial Infarction in Mice. *Circulation* **2004**, *109*, 544–549. [[CrossRef](#)]
37. Willekens, F.L.A.; Werre, J.M.; Groenen-Döpp, Y.A.M.; Roerdinkholder-Stoelwinder, B.; De Pauw, B.; Bosman, G.J.C.G.M. Erythrocyte vesiculation: A self-protective mechanism? *Br. J. Haematol.* **2008**, *141*, 549–556. [[CrossRef](#)]
38. Das, A.; Ziegler, O.; Danielson, K.; Simonson, B.; Lu, S.; Toxavidis, V.; John, T.; Ghiran, I.; Das, S. Role of Red Blood Cell Derived Extracellular Vesicles in Cardiac Remodeling After Myocardial Infarction in a Transgenic Murine Model. *Circ. Res.* **2017**, *121*, A414.
39. Etulain, J. Platelets in wound healing and regenerative medicine. *Platelets* **2018**, *29*, 556–568. [[CrossRef](#)]
40. Liu, Y.; Gao, X.-M.; Fang, L.; Jennings, N.L.; Su, Y.; Q. X.; Samson, A.L.; Kiriazis, H.; Wang, X.-F.; Shan, L.; et al. Novel Role of Platelets in Mediating Inflammatory Responses and Ventricular Rupture or Remodeling Following Myocardial Infarction. *Arterioscler. Thromb. Vasc. Biol.* **2011**, *31*, 834–841. [[CrossRef](#)]
41. Wan, E.; Yeap, X.Y.; Dehn, S.; Terry, R.L.; Novak, M.L.; Zhang, S.; Iwata, S.; Han, X.; Homma, S.; Drosatos, K.; et al. Enhanced Efferocytosis of Apoptotic Cardiomyocytes Through Myeloid-Epithelial-Reproductive Tyrosine Kinase Links Acute Inflammation Resolution to Cardiac Repair After Infarction. *Circ. Res.* **2013**, *113*, 1004–1012. [[CrossRef](#)] [[PubMed](#)]
42. Miyazawa, B.; Trivedi, A.; Togarrati, P.P.; Potter, D.; Baimukanova, G.; Vivona, L.; Lin, M.; Lopez, E.; Callcut, R.; Srivastava, A.K.; et al. Regulation of endothelial cell permeability by platelet-derived extracellular vesicles. *J. Trauma Acute Care Surg.* **2019**, *86*, 931–942. [[CrossRef](#)] [[PubMed](#)]
43. Johnson, J.; Wu, Y.-W.; Blyth, C.; Lichtfuss, G.; Goubran, H.; Burnouf, T. Prospective Therapeutic Applications of Platelet Extracellular Vesicles. *Trends Biotechnol.* **2020**. [[CrossRef](#)]

44. Wang, Y.; Zhang, L.; Li, Y.; Chen, L.; Wang, X.; Guo, W.; Zhang, X.; Qin, G.; He, S.-H.; Zimmerman, A.; et al. Exosomes/microvesicles from induced pluripotent stem cells deliver cardioprotective miRNAs and prevent cardiomyocyte apoptosis in the ischemic myocardium. *Int. J. Cardiol.* **2015**, *192*, 61–69. [[CrossRef](#)] [[PubMed](#)]
45. Théry, C.; Witwer, K.W.; Aikawa, E.; Alcaraz, M.J.; Anderson, J.D.; Andriantsitohaina, R.; Antoniou, A.; Arab, T.; Archer, F.; Atkin-Smith, G.K.; et al. Minimal information for studies of extracellular vesicles 2018 (MISEV2018): A position statement of the International Society for Extracellular Vesicles and update of the MISEV2014 guidelines. *J. Extracell. Vesicles* **2018**, *7*, 1535750. [[CrossRef](#)] [[PubMed](#)]
46. Van der Pol, E.; Hoekstra, A.G.; Sturk, A.; Otto, C.; Van Leeuwen, T.G.; Nieuwland, R. Optical and non-optical methods for detection and characterization of microparticles and exosomes. *J. Thromb. Haemost.* **2010**, *8*, 2596–2607. [[CrossRef](#)] [[PubMed](#)]
47. van der Pol, E.; Coumans, F.A.W.; Grootemaat, A.E.; Gardiner, C.; Sargent, I.L.; Harrison, P.; Sturk, A.; van Leeuwen, T.G.; Nieuwland, R. Particle size distribution of exosomes and microvesicles determined by transmission electron microscopy, flow cytometry, nanoparticle tracking analysis, and resistive pulse sensing. *J. Thromb. Haemost.* **2014**, *12*, 1182–1192. [[CrossRef](#)]
48. Arraud, N.; Linares, R.; Tan, S.; Gounou, C.; Pasquet, J.-M.; Mornet, S.; Brisson, A.R. Extracellular vesicles from blood plasma: Determination of their morphology, size, phenotype and concentration. *J. Thromb. Haemost.* **2014**, *12*, 614–627. [[CrossRef](#)]